

Court data

After being arrested a youth may be referred to the county state's attorney for prosecution. A petition is filed when a decision is made to prosecute. The number of petitions filed in each county can be found in the data tables section in Appendix H.

The court may also choose to perform investigations that may inform court staff of a youth's background and prior history. The number of **juvenile/social investigation reports** conducted by a county's probation department is also included in the data tables section in Appendix H.

The most common type of petition filed is a delinquency petition. **Delinquency petitions** are filed when a youth is alleged to be **delinquent**; that is, the youth allegedly violated or attempted to violate a state or federal statute, or a municipal or county ordinance. Once a delinquency petition is filed, a number of possible scenarios may follow. New information may come to light that results in the state's attorney dismissing the petition against the youth, a plea agreement, or referral to a diversionary program.

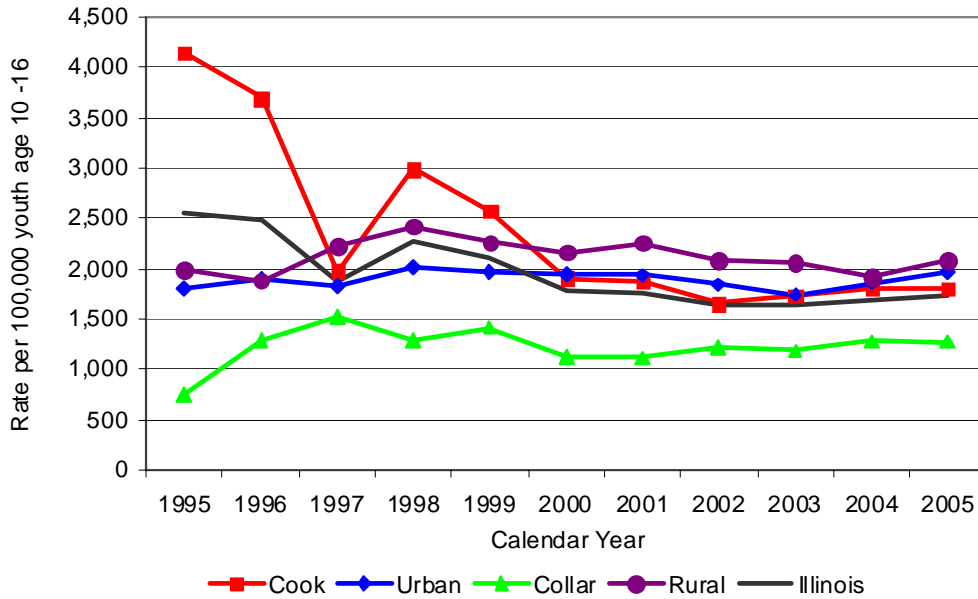
If none of these scenarios occur, an **adjudicatory hearing**, or **trial**, is held to determine whether the allegations against the youth are supported by evidence beyond a reasonable doubt. If the youth is adjudicated delinquent, a **dispositional hearing** or **sentencing hearing** is held. After the Juvenile Justice Reform Provisions of 1998 were enacted, the terms "adjudicatory hearing" and "dispositional hearing" were changed to "trial" and "sentencing hearing," respectively, to reflect the terms used in criminal court.

Data summary

Delinquency petitions

There was a steady decrease in the number of delinquency petitions filed statewide over the period studied. From 1995 to 2005, the number of delinquency petitions filed in Illinois decreased by 28 percent. This decline was driven in part by a 53 percent decline in delinquency petitions filed in Cook County between 1995 and 2005. *Figure 14* depicts the rate of delinquency petitions filed by county classification.

Figure 14
Rate of delinquency petitions filed per 100,000 youth age 10-16,
by county classification, 1995- 2005

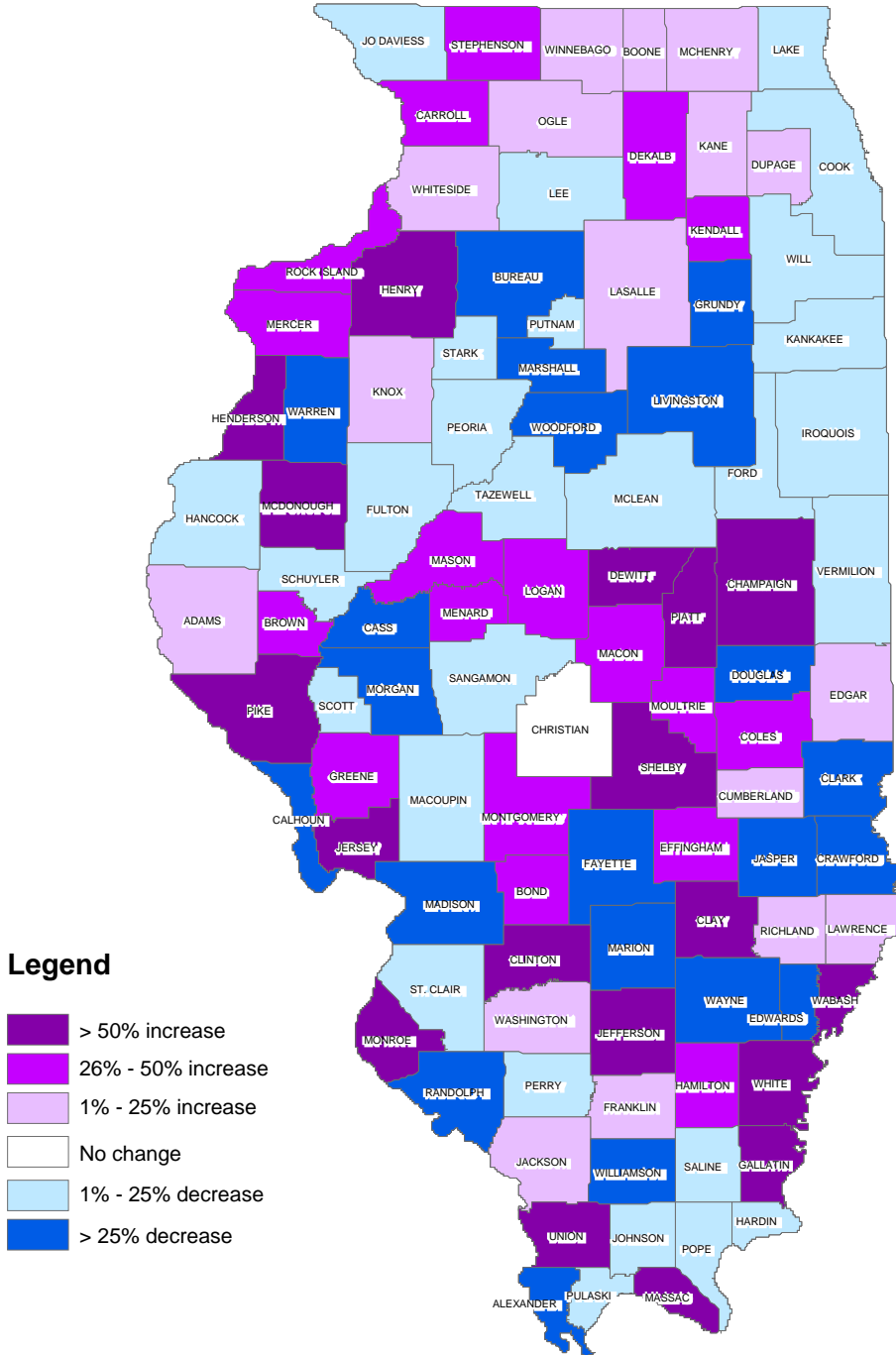


Source: Administrative Office of the Illinois Courts

Delinquency petition data for Cook County in 1997 were only available for January through June, which accounts for the dip depicted in the line graph in *Figure 14*.

From 2000 to 2005, the number of delinquency petitions filed statewide fell by 1 percent from 22,645 to 22,358. However, the rate of delinquency petitions filed slightly increased between 2004 and 2005. *Map 2* shows the percent change in the rate of delinquency petitions filed by county from 2000 to 2005.

Map 2
Percent change in rate of delinquency petitions filed in Illinois, 2000-2005

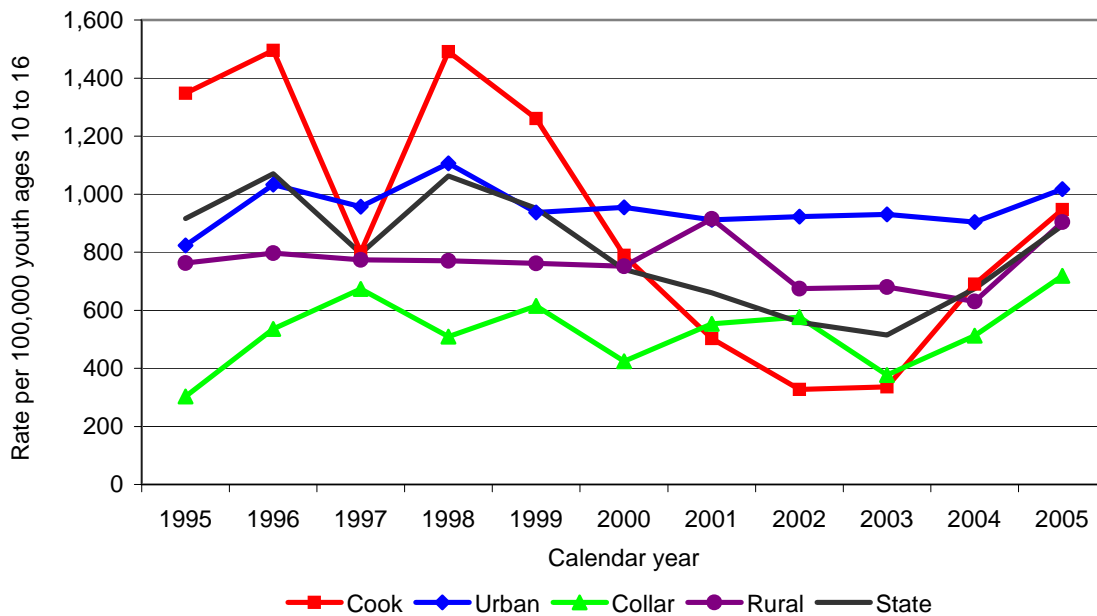


Source: Administrative Office of the Illinois Courts

Adjudications

In Illinois, the rate of adjudications of delinquency decreased slightly from 1995 to 2005. However, in 2003 the state rate of adjudications per 100,000 youth ages 10 to 16 was 515, the lowest rate since 1989 before increasing in CY04. *Figure 15* depicts the rate of youth adjudicated delinquent by county classification. Adjudication data for Cook County in 1997 were only available for January through June, which accounts for the dip depicted in the line graph in *Figure 15*.

Figure 15
Rate of youth adjudicated delinquent per 100,000 youth ages 10 to 16, by county classification, 1995-2005

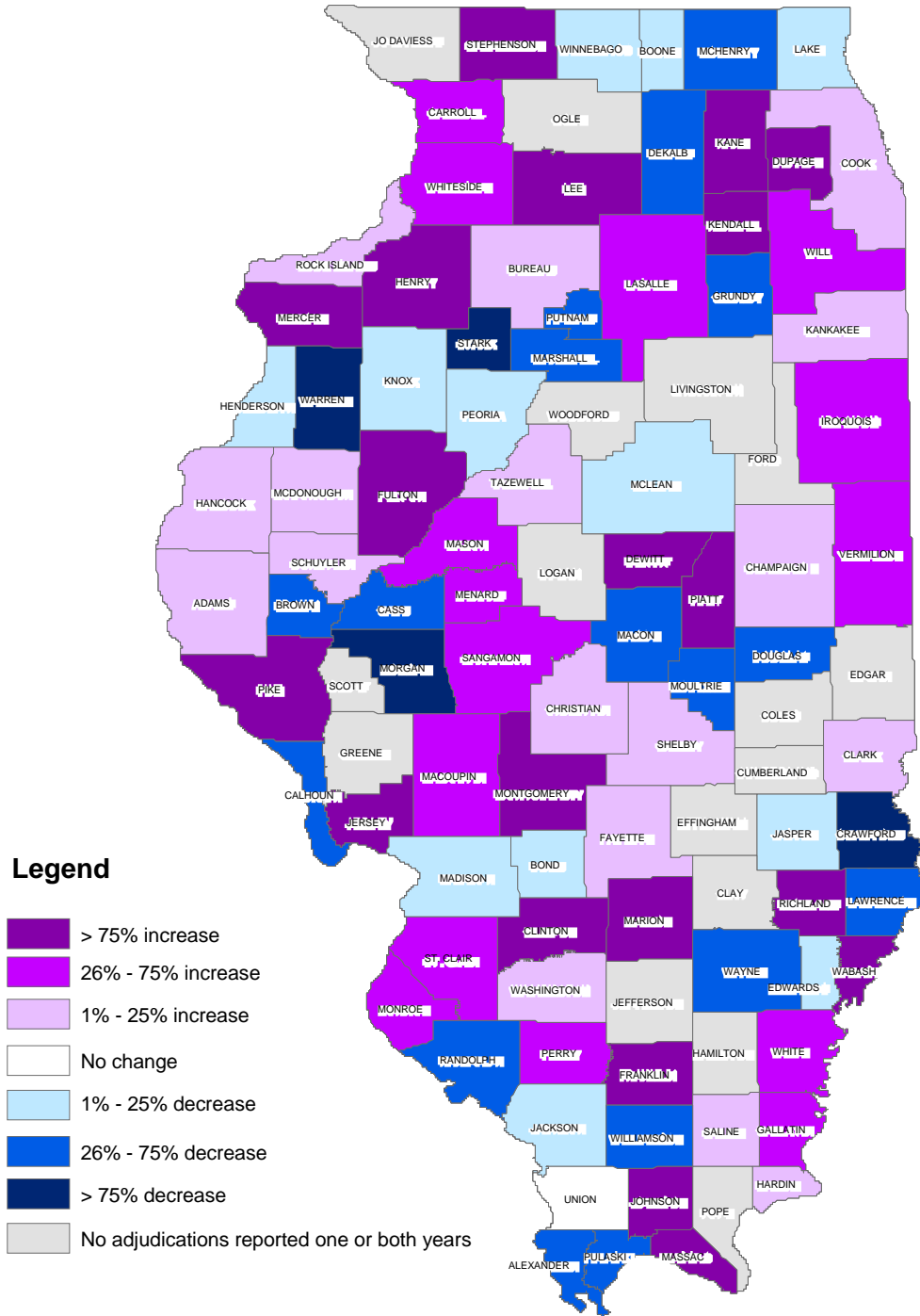


Source: Administrative Office of the Illinois Courts

A 22 percent increase occurred in the number of adjudications between 2000 and 2005, from 9,357 to 11,455. From 2000 to 2005, Cook County had a 20 percent increase in adjudications of delinquency. A 73 percent increase in the statewide rate of adjudications of delinquency was seen most recently, from a rate of 515 in 2003 to 891 in 2005.

Map 3 shows the percent change in the rate of youth adjudicated delinquent by county from 2000 to 2005.

Map 3
Percent change in rate of youth adjudicated delinquent in Illinois, 2000 - 2005



Source: Administrative Office of the Illinois Courts

Appendix H: Data tables section

The following data tables include county-level detail for several dozen juvenile justice data elements. When available, some data elements were also broken down by demographics, such as age, race, and gender. Data is provided by calendar year, academic year, or Fiscal Year, depending upon the reporting agency. Whenever possible, both 2000 and 2005 data were included.

Many caveats have been mentioned throughout this report regarding the interpretation of the following data. The bullet points below describe additional issues that should be considered when reviewing the data tables.

- If there is a blank space where data should be, then data were not available.
- When zero (0) is listed for a particular data element, there are two interpretations
 - There were zero instances of that particular event occurring.
 - Zero instances of that particular event were reported.

For instance: A zero appears for Greene County in the youth arrests table. This could be interpreted as Greene County not having any youth arrests for 2005, or that Greene County did not report any youth arrests to the Illinois State Police, but actually did arrest juveniles.

Whenever possible, rates were calculated by using the population most appropriate to the data element. For example, youth incarceration rates were calculated using the youth population 13-16 since a youth under the age of 13 cannot be incarcerated in an Illinois Youth Center, and youth 17 or older are considered adults in Illinois.

List of tables

Table 26: Number and type of petitions filed, CY00 – CY05	169
Table 27: Number and type of youth investigation reports for probation, CY05.....	171
Table 28: Number of delinquency petitions filed & youths adjudicated delinquent, CY00 – CY05.....	173

Table 26: Number and type of court petitions for youth filed, CY00 – CY05

Source: Administrative Office of the Illinois Courts

Other includes MRAI, Addiction, Dependency, Truancy

Age 10-16

County	2000 abuse & neglect	2005 abuse & neglect	2000 delinquency	2005 delinquency	2000 total	2005 total
Adams	67	73	110	123	177	196
Alexander	6	0	29	17	35	17
Bond	6	14	44	62	50	76
Boone	19	29	67	94	86	123
Brown	2	9	9	11	11	20
Bureau	2	14	101	63	103	77
Calhoun	3	5	18	9	21	14
Carroll	6	6	35	41	41	47
Cass	3	16	76	45	79	61
Champaign	88	72	151	225	239	297
Christian	12	42	85	82	97	124
Clark	5	4	56	34	61	38
Clay	5	19	6	25	11	44
Clinton	3	16	58	87	61	103
Coles	30	44	120	146	150	190
Cook	2,184	1,315	10,085	9,529	12,269	10,844
Crawford	12	18	100	64	112	82
Cumberland	3	2	48	52	51	54
DeKalb	56	31	158	245	214	276
DeWitt	5	4	34	62	39	66
Douglas	5	1	29	13	34	14
DuPage	54	88	871	1,107	925	1,195
Edgar	6	23	73	81	79	104
Edwards	6	8	34	8	40	16
Effingham	4	21	50	65	54	86
Fayette	9	16	92	45	101	61
Ford	5	24	39	30	44	54
Franklin	41	45	72	77	113	122
Fulton	30	26	99	80	129	106
Gallatin	13	11	7	14	20	25
Greene	8	11	12	16	20	27
Grundy	15	18	86	64	101	82
Hamilton	3	4	8	10	11	14
Hancock	8	6	38	29	46	35
Hardin	1	0	18	13	19	13
Henderson	1	3	5	9	6	12
Henry	27	27	47	70	74	97
Iroquois	21	7	87	76	108	83
Jackson	20	17	70	65	90	82
Jasper	8	7	41	16	49	23
Jefferson	22	57	106	154	128	211
Jersey	23	10	44	61	67	71
JoDaviess	6	8	22	17	28	25
Johnson	2	7	29	28	31	35
Kane	101	92	880	1,080	981	1,172
Kankakee	54	80	311	273	365	353
Kendall	15	8	138	249	153	257
Knox	21	27	86	89	107	116
Lake	321	210	857	745	1,178	955
LaSalle	59	82	222	246	281	328
Lawrence	4	24	33	33	37	57

Table 26: Number and type of court petitions for youth filed, CY00 – CY05

County	2000 abuse & neglect	2005 abuse & neglect	2000 delinquency	2005 delinquency	2000 total	2005 total
Lee	15	24	174	132	189	156
Livingston	14	20	152	98	166	118
Logan	22	18	73	89	95	107
McDonough	10	12	33	47	43	59
McHenry	68	84	258	352	326	436
McLean	145	142	147	146	292	288
Macon	67	120	322	396	389	516
Macoupin	22	34	83	67	105	101
Madison	267	204	806	567	1,073	771
Marion	63	86	140	59	203	145
Marshall	6	3	32	14	38	17
Mason	19	10	33	44	52	54
Massac	10	9	43	71	53	80
Menard	8	2	18	25	26	27
Mercer	5	1	41	46	46	47
Monroe	5	2	33	65	38	67
Montgomery	5	13	32	39	37	52
Morgan	19	39	34	22	53	61
Moultrie	7	2	37	45	44	47
Ogle	14	13	103	117	117	130
Peoria	299	304	630	505	929	809
Perry	3	9	32	30	35	39
Piatt	5	3	9	28	14	31
Pike	3	6	48	80	51	86
Pope	7	3	17	12	24	15
Pulaski	4	13	45	31	49	44
Putnam	1	3	19	17	20	20
Randolph	10	22	44	26	54	48
Richland	18	25	57	52	75	77
Rock Island	88	132	149	179	237	311
St. Clair	108	150	664	617	772	767
Saline	25	52	83	68	108	120
Sangamon	194	221	121	115	315	336
Schuyler	4	4	24	19	28	23
Scott	0	4	15	13	15	17
Shelby	7	3	16	57	23	60
Stark	4	3	13	11	17	14
Stephenson	26	27	186	217	212	244
Tazewell	88	111	225	161	313	272
Union	14	19	42	79	56	98
Vermilion	91	93	214	187	305	280
Wabash	7	8	49	66	56	74
Warren	11	16	69	30	80	46
Washington	0	8	54	49	54	57
Wayne	4	10	58	11	62	21
White	3	20	76	120	79	140
Whiteside	14	34	105	122	119	156
Will	91	188	499	521	590	709
Williamson	62	104	80	56	142	160
Winnebago	260	394	436	523	696	917
Woodford	19	23	76	36	95	59
Total	5,691	5,551	22,645	22,358	28,336	27,909

Table 27: Number and type of youth investigation reports for probation, CY05

Source: Administrative Office of the Illinois Courts

Age 10-16

County	Social Histories	Supplemental Social History	Intake Screening	Other Investigation	Total
Adams	65	64	146	0	275
Alexander	8	1	0	0	9
Bond	3	0	0	0	3
Boone	21	1	163	0	185
Brown	2	0	0	0	2
Bureau	9	1	28	15	53
Calhoun	3	0	0	0	3
Carroll	4	4	0	0	8
Cass	18	0	0	0	18
Champaign	155	44	0	576	775
Christian	17	0	0	0	17
Clark	6	2	0	0	8
Clay	2	0	25	0	27
Clinton	8	0	5	0	13
Coles	7	0	55	0	62
Cook	2,779	616	0	0	3,395
Crawford	2	0	0	0	2
Cumberland	4	0	14	0	18
DeKalb	27	7	61	85	180
DeWitt	0	0	0	0	0
Douglas	1	0	0	0	1
DuPage	511	22	767	393	1,693
Edgar	7	0	0	0	7
Edwards	5	0	0	1	6
Effingham	4	0	0	0	4
Fayette	9	0	0	0	9
Ford	2	0	0	0	2
Franklin	4	0	0	0	4
Fulton	8	0	100	49	157
Gallatin	11	0	0	0	11
Greene	7	0	0	0	7
Grundy	2	0	29	3	34
Hamilton	0	0	0	0	0
Hancock	3	1	51	19	74
Hardin	3	0	0	0	3
Henderson	0	2	14	2	18
Henry	12	3	159	4	178
Iroquois	14	0	67	0	81
Jackson	2	1	7	0	10
Jasper	4	0	5	0	9
Jefferson	9	0	0	0	9
Jersey	14	16	41	0	71
JoDaviess	12	1	0	0	13
Johnson	2	0	1	0	3
Kane	73	145	94	385	697
Kankakee	35	5	214	223	477
Kendall	2	0	353	0	355
Knox	4	0	59	28	91
Lake	334	167	370	312	1,183
LaSalle	21	1	310	0	332
Lawrence	3	0	0	0	3

Table 27: Number and type of youth investigation reports for probation, CY05

County	Social Histories	Supplemental Social History	Intake Screening	Other Investigation	Total
Lee	29	0	0	0	29
Livingston	37	5	484	77	603
Logan	31	0	0	1	32
McDonough	1	1	92	21	115
McHenry	171	0	127	4	302
McLean	184	16	1,263	101	1,564
Macon	31	13	0	0	44
Macoupin	32	6	1	4	43
Madison	80	0	440	173	693
Marion	7	0	0	0	7
Marshall	5	0	0	0	5
Mason	4	0	0	0	4
Massac	12	1	0	0	13
Menard	3	0	0	0	3
Mercer	3	0	0	0	3
Monroe	2	0	0	0	2
Montgomery	17	2	0	0	19
Morgan	8	9	200	2	219
Moultrie	7	0	0	0	7
Ogle	12	4	0	3	19
Peoria	133	107	0	0	240
Perry	6	1	0	0	7
Piatt	1	0	0	0	1
Pike	0	0	0	19	19
Pope	0	0	1	0	1
Pulaski	5	0	0	0	5
Putnam	2	0	0	0	2
Randolph	14	4	0	0	18
Richland	5	7	0	0	12
Rock Island	159	1	244	336	740
St. Clair	110	14	0	1	125
Saline	2	0	16	0	18
Sangamon	118	0	928	1,338	2,384
Schuyler	42	0	0	18	60
Scott	Reported with Greene County				
Shelby	1	1	0	0	2
Stark	5	0	2	0	7
Stephenson	20	0	33	0	53
Tazewell	21	1	294	0	316
Union	1	0	1	0	2
Vermilion	192	0	0	0	192
Wabash	6	0	0	0	6
Warren	2	2	41	10	55
Washington	0	0	0	0	0
Wayne	2	0	0	0	2
White	7	0	0	0	7
Whiteside	8	1	128	0	137
Will	162	71	1,165	0	1,398
Williamson	6	2	204	1	213
Winnebago	358	144	2,452	0	2,954
Woodford	40	0	3	2	45
Total	6,362	1,517	11,257	4,206	23,342

Table 28: Number of delinquency petitions filed & youth adjudicated delinquent, CY00 – CY05

Source: Administrative Office of the Illinois Courts

Rate per 100,000 Youth Age 10-16

County	2000 Petitions	Rate	2005 Petitions	Rate	Rank	2000 Adjudications	Rate	2005 Adjudications	Rate	Rank
Adams	110	1,561	123	1,895	63	64	908	70	1,078	40
Alexander	29	2,746	17	2,031	55	22	2,083	7	836	50
Bond	44	2,822	62	4,218	9	20	1,283	18	1,224	28
Boone	67	1,336	94	1,655	72	97	1,935	90	1,585	22
Brown	9	1,751	11	2,455	40	7	1,362	2	446	75
Bureau	101	2,747	63	1,889	64	20	544	19	570	65
Calhoun	18	3,564	9	1,915	61	3	594	2	426	77
Carroll	35	2,002	41	2,722	33	18	1,030	24	1,594	21
Cass	76	5,736	45	3,462	21	71	5,358	42	3,231	1
Champaign	151	1,022	225	1,591	74	104	704	102	721	55
Christian	85	2,424	82	2,422	43	34	970	39	1,152	33
Clark	56	3,231	34	1,986	57	29	1,673	30	1,752	15
Clay	6	429	25	1,908	62	10	715	0	0	90
Clinton	58	1,571	87	2,517	36	19	514	42	1,215	29
Coles	120	2,880	146	3,988	12	0	0	14	382	80
Cook	10,085	1,906	9,529	1,788	67	4,161	786	4,991	936	46
Crawford	100	4,929	64	3,655	18	39	1,922	4	228	87
Cumberland	48	3,756	52	4,602	8	0	0	0	0	90
DeKalb	158	1,959	245	2,929	27	38	471	25	299	84
DeWitt	34	2,040	62	3,914	13	16	960	33	2,083	12
Douglas	29	1,275	13	652	100	11	484	7	351	81
DuPage	871	924	1,107	1,149	87	269	285	527	547	69
Edgar	73	3,694	81	4,623	6	0	0	0	0	90
Edwards	34	5,191	8	1,316	85	7	1,069	5	822	51
Effingham	50	1,247	65	1,711	70	0	0	42	1,106	39
Fayette	92	4,240	45	2,338	46	18	829	19	987	44
Ford	39	2,489	30	2,140	52	0	0	0	0	90
Franklin	72	1,925	77	2,162	51	11	294	23	646	58
Fulton	99	2,839	80	2,481	39	8	229	21	651	57
Gallatin	7	1,232	14	2,504	37	2	352	3	537	71
Greene	12	756	16	1,115	88	0	0	0	0	90
Grundy	86	2,070	64	1,476	78	31	746	24	553	67
Hamilton	8	943	10	1,330	84	0	0	0	0	90
Hancock	38	1,801	29	1,543	75	18	853	19	1,011	43
Hardin	18	4,688	13	3,824	14	1	260	1	294	85
Henderson	5	621	9	1,301	86	7	870	5	723	54
Henry	47	853	70	1,404	80	33	599	56	1,123	36
Iroquois	87	2,533	76	2,489	38	33	961	49	1,605	20
Jackson	70	1,529	65	1,606	73	51	1,114	43	1,063	41
Jasper	41	3,498	16	1,688	71	9	768	6	633	59
Jefferson	106	2,575	154	4,006	11	0	0	66	1,717	16
Jersey	44	1,842	61	2,849	29	12	502	24	1,121	37
JoDaviess	22	1,011	17	842	96	0	0	19	942	45
Johnson	29	2,993	28	2,957	26	14	1,445	30	3,168	2
Kane	880	1,914	1,080	2,010	56	222	483	660	1,229	27
Kankakee	311	2,782	273	2,415	44	157	1,404	179	1,583	23
Kendall	138	2,184	249	3,012	25	37	586	85	1,028	42
Knox	86	1,719	89	1,944	60	62	1,239	55	1,201	31
Lake	857	1,199	745	928	95	472	660	489	609	61
LaSalle	222	1,904	246	2,254	47	88	755	121	1,109	38
Lawrence	33	2,285	33	2,439	41	16	1,108	6	443	76

Table 28: Number of delinquency petitions filed & youth adjudicated delinquent, CY00 – CY05

County	2000 Petitions	Rate	2005 Petitions	Rate	Rank	2000 Adjudications	Rate	2005 Adjudications	Rate	Rank
Lee	174	4,595	132	3,795	15	29	766	79	2,271	10
Livingston	152	3,569	98	2,604	34	93	2,184	0	0	90
Logan	73	2,547	89	3,497	20	49	1,710	0	0	90
McDonough	33	1,396	47	2,247	48	18	761	19	908	47
McHenry	258	846	352	1,012	92	122	400	88	253	86
McLean	147	1,081	146	1,042	90	102	750	81	578	63
Macon	322	2,836	396	3,731	16	175	1,541	65	612	60
Macoupin	83	1,595	67	1,423	79	32	615	38	807	52
Madison	806	3,042	567	2,241	49	158	596	139	549	68
Marion	140	3,250	59	1,488	77	1	23	64	1,614	19
Marshall	32	2,564	14	1,084	89	3	240	2	155	89
Mason	33	2,012	44	2,833	30	15	915	21	1,352	24
Massac	43	3,226	71	5,383	3	14	1,050	32	2,426	8
Menard	18	1,255	25	1,867	65	13	907	16	1,195	32
Mercer	41	2,247	46	2,833	30	22	1,205	35	2,155	11
Monroe	33	1,057	65	2,117	53	12	384	17	554	66
Montgomery	32	1,055	39	1,368	82	22	725	37	1,298	26
Morgan	34	957	22	693	99	24	675	0	0	90
Moultrie	37	2,409	45	3,230	23	19	1,237	10	718	56
Ogle	103	1,728	117	1,956	59	0	0	68	1,137	35
Peoria	630	3,546	505	2,871	28	371	2,088	346	1,967	14
Perry	32	1,512	30	1,504	76	5	236	7	351	81
Piatt	9	528	28	1,748	69	3	176	27	1,685	18
Pike	48	2,743	80	5,096	4	16	914	31	1,975	13
Pope	17	4,348	12	3,692	17	0	0	1	308	83
Pulaski	45	5,090	31	4,167	10	18	2,036	4	538	70
Putnam	19	2,870	17	2,824	31	16	2,417	8	1,329	25
Randolph	44	1,382	26	931	94	35	1,099	16	573	64
Richland	57	3,411	52	3,509	19	4	239	9	607	62
Rock Island	149	1,047	179	1,371	81	131	921	149	1,141	34
St. Clair	664	2,272	617	2,218	50	238	815	338	1,215	29
Saline	83	3,081	68	2,773	32	19	705	19	775	53
Sangamon	121	637	115	622	101	74	390	91	493	74
Schuyler	24	3,529	19	3,089	24	14	2,059	15	2,439	7
Scott	15	2,632	13	2,434	42	0	0	0	0	90
Shelby	16	664	57	2,524	35	8	332	9	399	78
Stark	13	1,997	11	1,864	66	22	3,379	3	508	73
Stephenson	186	3,591	217	4,615	7	14	270	148	3,148	3
Tazewell	225	1,763	161	1,335	83	107	839	109	904	48
Union	42	2,323	79	4,664	5	16	885	15	885	49
Vermilion	214	2,601	187	2,366	45	114	1,385	187	2,366	9
Wabash	49	3,701	66	5,660	2	14	1,057	36	3,087	4
Warren	69	3,720	30	1,958	58	32	1,725	5	326	82
Washington	54	3,147	49	3,243	22	42	2,448	41	2,713	6
Wayne	58	3,396	11	732	97	5	293	3	200	88
White	76	5,263	120	9,623	1	29	2,008	37	2,967	5
Whiteside	105	1,700	122	2,109	54	70	1,134	98	1,694	17
Will	499	866	521	724	98	177	307	371	516	72
Williamson	80	1,410	56	1,021	91	67	1,181	21	383	79
Winnebago	436	1,499	523	1,750	68	408	1,403	362	1,211	30
Woodford	76	1,926	36	941	93	4	101	0	0	90
Total	22,645	1,792	22,358	1,739		9,357	741	11,455	891	